

**Triacs - continued**

**High Commutation - continued**

$V_{DRM}$ V	$I_T$ rms A	$I_{TSM}$ A	$t_{2+}$ g+	$t_{2-}$ g-	$t_{2-}$ g+	$t_{2-}$ g-	$V_{GT}$ V	Pack- age	Mftrs. List No.
<b>Isolated tab (to 2.5kV rms)</b>									
600	6.0	63	50	50	50	—	1.5	TO-220AB	BTA06-600BW
600	8.0	80	50	50	50	—	1.5	TO-220AB	BTA08-600BW
600	8.0	80	35	35	35	—	1.5	TO-220AB	BTA08-600CW
600	8.0	80	10	10	10	—	1.5	TO-220AB	BTA08-600SW
600	8.0	80	5	5	5	—	1.5	TO-220AB	BTA08-600TW
600	10.0	105	50	50	50	—	1.5	TO-220AB	BTA10-600BW
600	12.0	126	50	50	50	—	1.5	TO-220AB	BTA12-600BW
600	12.0	126	10	10	10	—	1.5	TO-220AB	BTA12-600SW
600	16	157	50	50	50	—	1.5	TO-220AB	BTA16-600BW
600	16	160	35	35	35	—	1.5	TO-220AB	BTA16-600CW
600	24	240	50	50	50	—	1.5	TO-220AB	BTA24-600BW
600	25	250	50	50	50	—	1.5	RD-91	BTA25-600BW
600	25	262	50	50	50	—	1.5	TOP-3	BTA26-600BW
700	12.0	120	35	35	35	—	1.5	TO-220AB	BTA12-700CW
<b>Non-isolated tab (=t<sub>2</sub>)</b>									
600	12.0	120	50	50	50	—	1.5	TO-220	BTB12-600BW
600	12.0	126	35	35	35	—	1.3	D2-Pak	T1235-600G
600	16	170	35	35	35	—	1.3	D2-Pak	T1635-600G

● Low gate drive, logic level devices

211152

Mftrs. List No.	Order Code	1+	25+	100+	250+	+
<b>Isolated Tab</b>						
BTA06-600BW	234-667▲	82.00	62.00	54.00	42.00	--
BTA08-600BW	363-649▲	87.00	66.00	57.00	45.00	--
BTA08-600CW	357-5720▲	94.00	72.00	62.00	46.00	--
BTA08-600SW	484-830▲	105.00	80.00	65.00	51.00	--
BTA08-600TW	505-481▲	91.00	70.00	56.00	47.00	--
BTA10-600BW	234-679▲	98.00	75.00	64.00	48.00	--
BTA12-600BW	234-680▲	96.00	73.00	63.00	47.00	--
BTA12-600SW	484-842▲	96.00	73.00	63.00	50.00	--
BTA12-700CW	682-603▲	89.00	68.00	58.00	45.00	--
BTA16-600BW	234-710▲	94.00	72.00	62.00	48.00	--
BTA16-600CW	682-615▲	94.00	72.00	62.00	53.00	--
BTA20-600CW	234-692▲	129.00	99.00	85.00	66.00	--
BTA24-600BW	705-585▲	143.00	110.00	94.00	73.00	--
BTA25-600BW	357-5743▲	334.00	272.00	240.00	203.00	--
BTA26-600BW	980-1707●	247.00	189.00	162.00	112.00	--
<b>Non-isolated Tab</b>						
BTB12-600BW	357-5779▲	79.00	60.00	52.00	39.00	--
T1235-600G	302-3059▲	83.00	64.00	55.00	43.00	--
T1635-600G	302-3060▲	96.00	73.00	63.00	51.00	--

Semiconductors - Discretes

21

**Alternistors**



TOP3

- High commutation
- High surge current
- High voltage
- Suitable for inductive load power control

$I_T$ rms (A)	$V_{DRM}$ $V_{RRM}$ (V)	$I_{TSM}^*$ (A)	$t_{2+}$ g+	$t_{2-}$ g-	$t_{2-}$ g+	$t_{2-}$ g-	$V_{GT}$ (V)	Package	Mftrs. List No.
25	1200	230	150	150	150	—	1.5	TOP-3	TPDV1225RG
40	600	350	200	200	200	—	1.5	TOP-3	TPDV640RG
40	800	350	200	200	200	—	1.5	TOP-3	TPDV840
40	1200	350	200	200	200	—	1.5	TOP-3	TPDV1240

\*  $I_{TSM}$  @  $t_p=10ms$

211258

Mftrs. List No.	Order Code	1+	25+	100+	250+	+
TPDV640RG	105-7305●	463.00	376.00	310.00	242.00	--
TPDV840	980-4250●	820.00	656.00	492.00	328.00	--
TPDV1225RG	105-7304●	566.00	460.00	379.00	295.00	--
TPDV1240	980-4242●	661.00	537.00	442.00	388.00	--

**Trigger Modules**

**Phase Angle, Single Phase**



H = 43, W = 92, D = 60  
Fixing centres = 80 (M5 clear)

A versatile, single phase universal trigger module for firing thyristors, triacs and thyristor-diode stacks from 1A to 1000A, of 100V to 1600V rating. The unit provides adjustable signal matching to voltage or current signals, selectable soft start delay and adjustable current limit



control.

When used with a suitable transformer (not supplied), the module will trigger to 110V and 240V.

Signal span min	0 to 2V dc	Trigger isolation	2500V rms
Signal span max	0 to 25V dc	AC i/p voltage	18V rms ±15% @ 65mA
Signal zero offset	0 to 30% of span	Auxiliary o/p	5V dc @ 5mA protected
Signal i/p resistance	5000 Ω ±20%	Manual potentiometer	2K, 4K7, 5K or 10K
Trigger pulse height	8V (open circuit)	Thyristor line voltage	110V to 550V rms 50/60Hz
Trigger pulse rating	250mA into 10Ω	Max. ambient temp	65°C operational
Trigger shorted o/p	Protected		

211090

Mftrs. List No.	Order Code	1+	5+	50+
AFM-11	121-3099●	6,694.00	5,586.00	4,941.00

**Phase Angle, Integral Transformer Single Phase**



H=32, W=92, D=70  
Fixing centres = 80 (M5 clear)



Advanced trigger module for single phase ac control. Integral 240V supply transformer allows operation at non-standard voltages. Short circuit protected steered gate triggering is used for inductive load control and an uncommitted internal op-amp provides feedback control. Aux 5V reference.

Conforms to **UL94V-0**, **CSA** and **VDE** approvals.

Supply voltage	204V to 264V ac	Off-state dv/dt	500V/μs min.
Supply frequency	45Hz to 65Hz	Auxiliary output	5V, 20mA dc min.
Input range	0 to 5V dc	Isolation voltage	2.5kV rms
Input threshold	0.3V dc typ.	Controllable retard angle	180° typ.
Max. input voltage	25V dc	Gate short-circuit response	250ms to 500ms
Input impedance	100kΩ min.	Op-amp input voltage range	±10.5V
Output current (per gate)	1.9A max.	Operating temperature	0°C to +55°C

211107

Supply Voltage	Mftrs. List No.	Code	1+	5+	10+
240V	SKPC200-240	120-8447●	9,843.00	8,014.00	7,284.00

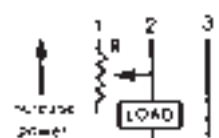
**Power Regulators**

**6A, 10A, 15A, Enclosed or IC only**



- Solid state reliability
- 0-99% phase angle power control (resistive load)
- Enclosed design incorporates earthable, isolated heatsink
- Power IC offers 6.3mm or 10.3mm mounting holes, and requires an additional potentiometer
- Uses include heating control, lighting and motor speed control
- Earthable heatsink

Connections:



H = 44, W = 33, D = 23 (exc spindle), Shaft dia = 6.3  
Bush L = 6, Fixing hole dia = 10, Cable L = 170 min

Connections: Red Line 220/240V, 50/60Hz  
White Neutral through load

H (excl pins) = 27.7 (small mounting hole series)  
34.1 (large mounting hole series)  
W = 16.0, D = 6.4

RMS max. on state current (tab 70°C)	6A, 10A and 15A
Peak one cycle surge current	121-3086, 121-3082=100A 121-3087, 121-3083=120A 121-3089, 121-3084, 121-3085=150A
Minimum holding load current	30mA
Repetitive peak voltage (tab 70°C)	400V
Hysteresis (typical)	5%
Total conduction phase angle (typical)	0 to 160°
Controlled conduction phase angle (typical)	30 to 160°
Tab surface operating range	-40°C to +70°C
Insulation withstand capability (tab 70°C)	1600V for 1 minute

**Recommended heatsink to achieve quoted ratings:** Below 5A use 8°C/W heatsink, or 7 x 7cm panel. 10A use 4°C/W heatsink or 10 x 10cm panel. 15A use 2°C/W heatsink or 17 x 17cm panel.

**Fusing:** Use only high speed fuses.

211379

Mftrs. List No.	Current	Order Code	1+	10+	25+	100+
CSR2-6E	6	121-3086●	2,180.00	1,571.00	--	--
CSR2-10E	10	121-3087●	2,258.00	1,600.00	--	--
CSR2-15E	15	121-3089●	2,612.00	2,169.00	1,916.00	1,673.00
CSR06-04A	6	121-3082●	1,316.00	889.00	778.00	738.00
CSR10-04A	10	121-3083●	1,370.00	1,150.00	762.00	752.00
CSR15-04A	15	121-3084●	1,523.00	1,100.00	945.00	869.00
CSR15-04B	15A	121-3085●	1,917.00	1,447.00	1,198.00	847.00